

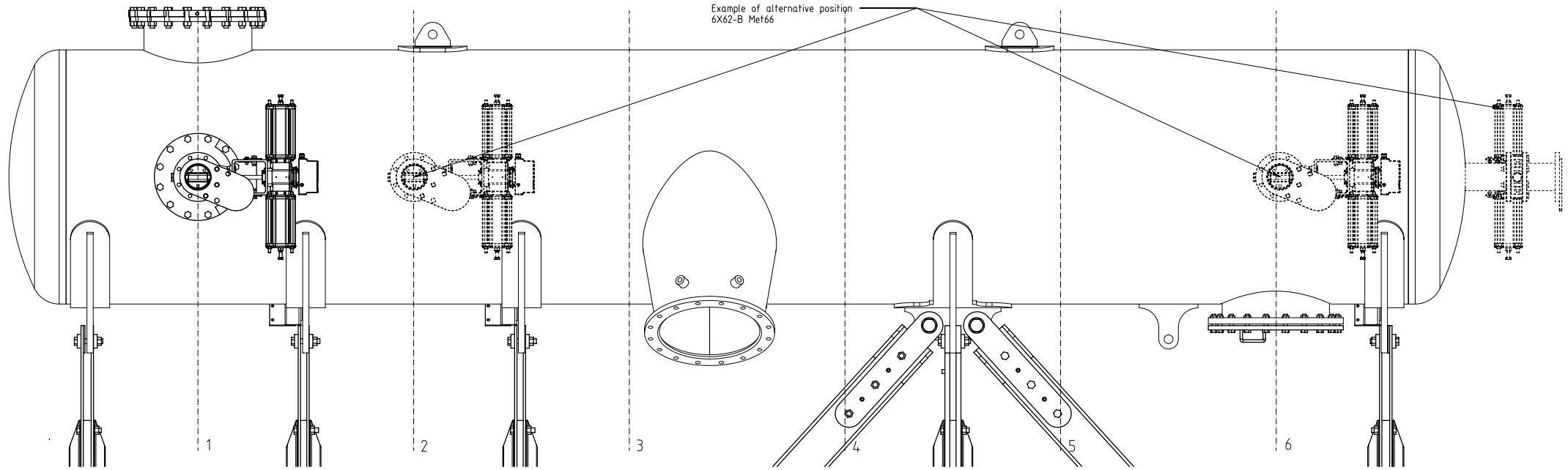


# Position of the butterfly valve on manifold

Exhaust manifold and standard position of the Exhaust waste gate are defined in drawings of exhaust manifold.

Alternative position can be requested with RAE:

- exhaust waste gate have not to be on the position of flex foot - potential risk of the welding stresses
- exhaust waste gate have not to be on the position above turbocharger - difficult access to disassembly turbocharger
- exhaust waste gate can be on FE location in the bottom
- exhaust waste gate can be located in the cylinder centre - in the manifold must be welded additional ribs for exhaust waste gate connection pipe
- thermal expansion values can be calculated by the engine builder and shipyard considering the location of the fixed support of the manifold and external piping according guidance from chapter 6 of SCR PIPING GUIDE - DAAD064155.

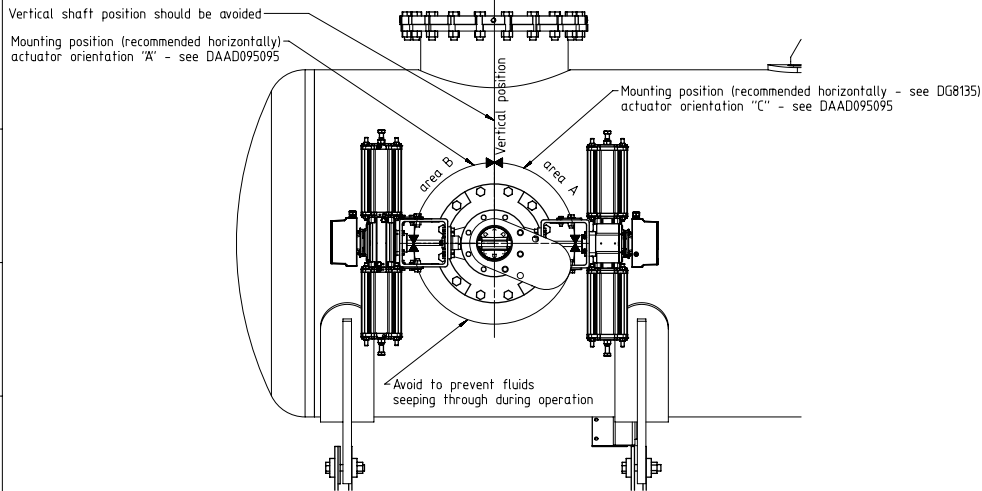


## Mounting position of the butterfly valve and actuator orientation

DG8135 has been described recommend mounting position of the butterfly valve on the connection pipe to the exhaust manifold.

Alternative mounted position can be requested with RAE:

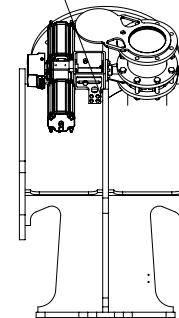
- the butterfly valve can be mounted in area A and B
- to keep positioner in secured position, actuator orientation have to be respected acc to DAAD095095



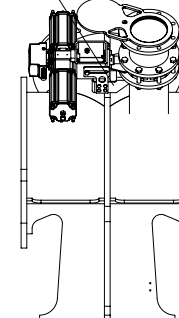
## Position of exhaust waste gate on bypass pipe for HP SCR

- ① Pipe of exhaust waste gate is welded on bypass pipe according to DG8156. Depends on engine, holder can be welded on bypass (X52, X62, X72) or assembled to flange

Holder assembled on the bypass  
Example of DN200



Holder assembled on the flange  
Example of DN200



SURFACE PROTECTION SEE GROUP 0344		Drawn	D	26/001	mgr0206	16-11-2023	DAAD004802	Design change	Approved	Activity Code	4	3
TOLERANCING PRINCIPLE ISO8015		Checked									3	
GENERAL TOLERANCES ACCORDING TO ISO2768-mK		Approved									2	
		Unit	mm	kg	°C	hmm	°	NX	A1	hmm	°	
PAAD327310										Drawing	2/2	
										Pages		

## SPECIFICATION waste gate selection

X, X-DF, X-DF-A, X-DF-M

### TRACK CHANGES

DATE	SUBJECT	DESCRIPTION
2021-12-22	DRAWING SET	First web upload
2022-03-14	PAAD327310	Drg – new revision
2024-04-10	PAAD327310	Drg – new revision

### DISCLAIMER

© Copyright by Winterthur Gas & Diesel Ltd.

All rights reserved. No part of this document may be reproduced or copied in any form or by any means (electronic, mechanical, graphic, photocopying, recording, taping or other information retrieval systems) without the prior written permission of the copyright owner.

THIS PUBLICATION IS DESIGNED TO PROVIDE AN ACCURATE AND AUTHORITATIVE INFORMATION WITH REGARD TO THE SUBJECT-MATTER COVERED AS WAS AVAILABLE AT THE TIME OF PRINTING. HOWEVER, THE PUBLICATION DEALS WITH COMPLICATED TECHNICAL MATTERS SUITED ONLY FOR SPECIALISTS IN THE AREA, AND THE DESIGN OF THE SUBJECT-PRODUCTS IS SUBJECT TO REGULAR IMPROVEMENTS, MODIFICATIONS AND CHANGES. CONSEQUENTLY, THE PUBLISHER AND COPYRIGHT OWNER OF THIS PUBLICATION CAN NOT ACCEPT ANY RESPONSIBILITY OR LIABILITY FOR ANY EVENTUAL ERRORS OR OMISSIONS IN THIS BOOKLET OR FOR DISCREPANCIES ARISING FROM THE FEATURES OF ANY ACTUAL ITEM IN THE RESPECTIVE PRODUCT BEING DIFFERENT FROM THOSE SHOWN IN THIS PUBLICATION. THE PUBLISHER AND COPYRIGHT OWNER SHALL UNDER NO CIRCUMSTANCES BE HELD LIABLE FOR ANY FINANCIAL CONSEQUENTIAL DAMAGES OR OTHER LOSS, OR ANY OTHER DAMAGE OR INJURY, SUFFERED BY ANY PARTY MAKING USE OF THIS PUBLICATION OR THE INFORMATION CONTAINED HEREIN.